

FOR 274 Assignment 7: Tree Age and Crown Class

This assignment should be completed and handed in at the start of the next lab.

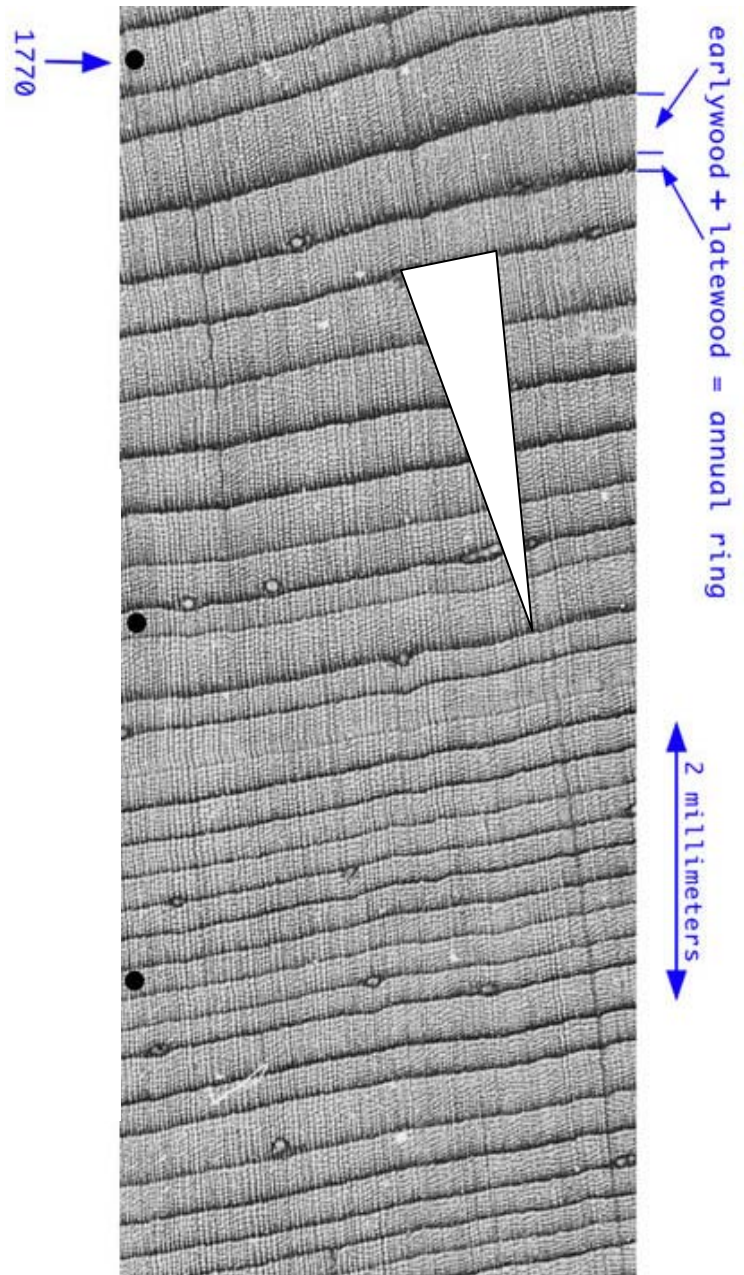
Credit: This Assignment is worth 20 points

Task 1: Use this image and what you have learned in class to answer the following questions:

a. What is the tree age associated with the lower two black dots. What did you assume in making this assessment

b. If we assume that the white triangle represents some form of damage (for example the result of a fire). Explain what year the damage occurred?

c. Given this information, if the tree aged for another 100 years, how thick would you expect those 100 years of rings to be?



More Questions on Next Page:

d. What crown class classifications would you give for the following trees? Explain your assumptions:

